

# *Sherratt Figures: A Photo Index*



*Myrna Schkolne*

*Sherratt Figures:  
A Photo Index*

Myrna Schkolne

© 2022 Myrna Schkolne

# Introduction

In 1991, Malcolm and Judith Hodkinson published *Sherratt? A Natural Family of Staffordshire Figures*. Their ground breaking book was the first to use scientific methodology to establish criteria for attributing Staffordshire pottery figures.

Although the potter Obadiah Sherratt did not mark his figures, by the twentieth century a small group of figures with distinctive features was, rightly or wrongly, associated with his name. The Hodkinsons linked many more figures with shared features to this group. Acknowledging that an attribution to Sherratt specifically could be challenged, they suggested that the use of the Sherratt name was, at the very least, a convenient moniker that would be easily understood.

The Hodkinsons' work is a flawless and invaluable reference that has withstood the test of time. It includes an alphabetical listing of the Sherratt models, each illustrated with a small black and white image. Since its publication, further models have inevitably come to light, and, for that reason, I have assembled this photo record. Digital technology affords limitless space, so I have included multiple variations of many figures, and most images are in color.

The models illustrated herein are those that I am certain were, at the very least, probably made by Sherratt. I am aware of a handful of other models that he may well have made, but I lack evidence to confirm the attribution. The text in this document is sparse because the Hodkinsons have already said it all, so please refer to their work for a deeper understanding.

## Subjects

Abraham Stop  
Air, see Elements  
Ale Bench  
Archangel Gabriel  
Archer  
Autumn, see Seasons  
Baptism of Mary  
Barber  
Bear Baiting  
Billy Waters and Douglas  
Bird Nesting  
Birds  
Bull Baiting  
Bulls, see Cows  
Byron  
Cats  
Ceres  
Chariot, see Venus and Cupids  
Charity, see Faith, Hope, Charity  
Charity, see Faith, Hope, Charity  
Christ and the Woman of Samaria  
Christ's Agony  
Cobbler  
Corder and Marten  
Cows and Bulls  
Courtship  
Dandies  
Death of Munrow  
Deer  
Deer Stalker  
Dogs  
Douglas, see Billy Waters  
Dr. Syntax  
Duke of York  
Earth, see Elements  
Elements  
Elijah and the Widow  
Faith, Hope, Charity  
Family  
Fire, see Elements  
Flight to Egypt, Return from Egypt  
Flora  
Flower Vendors  
Foxes  
Gardeners  
Girls Resting on Plinths  
Grecian & Daughter  
Hope, see Faith, Hope, and Charity  
Jim Crow  
Jugs, see Toby Jugs, Puzzle Jugs  
King William IV, Queen Adelaide  
Land Lord, Land Lady  
Leopards  
Lions  
Malibran, Maria  
Man with Book, Man with Sword  
Marten, Maria, see Corder and Marten  
Milkmaid  
Miss Foot  
Musicians  
Nelson  
Neptune and Venus  
Paul Pry  
Performing Animals  
Polito's Menagerie  
Pomona

Poor Soldier  
Prepare to Meet Thy God, see also Archangel Gabriel  
Putti  
Puzzle Jugs  
Queen Adelaide, see King William IV  
Queen Victoria  
Reading  
Red Barn  
Religious Officials, see also Rev. John Wesley  
Return from Egypt, see Flight to Egypt  
Rev. John Wesley, see also Religious Officials  
Roger Giles  
Royal Supporters  
Saint George & Dragon  
Saints, Biblical  
Seasons  
Sheep  
Shepherds  
Souter Johnny, see Tam O'Shanter  
Summer, see Seasons  
Tam O'Shanter, Souter Johnny  
Teetotal  
Tigers, see also Death of Munrow  
Toby Jug  
Turk  
Unidentified  
Vendors  
Venus and Cupids  
Vestris, Madame  
Virgin Mary  
Water, see Elements  
Weddings  
Welsh Tailor and Wife  
Widow, see Elijah  
Winter, see Seasons  
Wombwell's Menagerie

# Abraham Stop



Ale Bench







# Archangel Gabriel



# Archer

The lady archer pairs with the sportsman with dog. The figure without bocage was made that way.



# Baptism of Mary





# Barber



## Bear Baiting

Sherratt's bear baiting groups, known from only these two examples, probably date from his early years. The man and dog are also components of Sherratt's earliest bull baiting groups. The base on the first group is like that used for a large Sherratt tiger. Slab bases, as on the second group, are on a Death of Munrow and a large lion, both apparently being earlier Sherratt products.



Courtesy John Howard

## Billy Waters and Douglas



## Bird Nesting





# Birds



Courtesy John Howard

## Bull Baiting

The first two models are Sherratt's earliest bull baitings. The clawed base, apparently his first table base, was in use before 1820. The other brown table base followed shortly thereafter.



Courtesy Christie's



This is the most well-known form of Sherratt's bull baiting, and it is most often on the marbled table base used in the 1820s and 1830s. The bull and the man differ from and are noticeably smaller than those in the groups on brown bases. Sometimes the man's hat was omitted. The example on the rainbow base is uncommon, and the dog atop the bull is smaller.



Courtesy Christie's

These three groups utilize a different man. The first is on the same scale as traditional bull baitings on marbled bases. The other two are significantly smaller, measuring at most 9 inches across.



These groups were made without a man. The first, measuring 13.7 inches across, is on the same scale as traditional full-sized bull baiting groups, and the second, measuring 8 inches across, is smaller.



These groups use many of the same molds as previous groups, but none is particularly evocative of “Sherratt” or exhibits features enabling attribution. Perhaps they were forerunners to Sherratt’s other groups, or perhaps other potters made them. The dog on the last group is a replacement.



## Byron, Lord

“Byron” is incised on the reverse of this bust. The motif on the front of the socle is on several Sherratt boxes. (See Dogs, Girls on Plinths.) It also is on busts of the Duke of York and Nelson that, unlike this bust, are not painted in a typical Sherratt style.



# Cats





# Ceres



Christ and the Woman of Samaria



# Christ's Agony



# Cobbler



# Corder and Marten

The script and dress pattern on the final two figures are not otherwise on Sherratt figures, so another potter may have made them.





Courtesy Sotheby's

# Courtship



Courtesy Roger Jones







# Cows and Bulls





# Dandies





# Death of Munrow



Courtesy the Brighton and Hove Museums



Courtesy Sotheby's



# Deer





## Deer Stalker





# Dogs





Dr. Syntax





## Duke of York

This bust is impressed “DUKE OF YORK” on the reverse and, like the small bust of the Nelson, Sherratt may have made it. The painting on both busts is atypical, but the royal motif on the socles is otherwise only associated with Sherratt. He used that motif on a bust of Byron and on box lids (see Dogs and Girls Resting on Plinths) that display additional Sherratt features.



# Elements



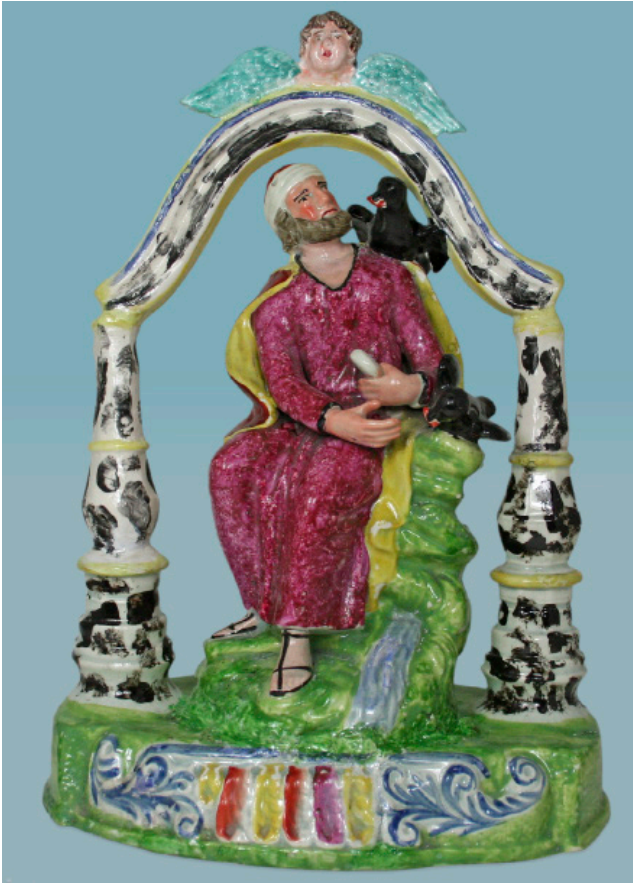
# Elijah and the Widow

Note that Sherratt made two models of the Widow.



Courtesy John Howard







Faith, Hope, Charity





# Family

These figures also occur in Teetotal groups.



Courtesy the National Trust

# Flight to Egypt, Return from Egypt





# Flora



# Flower Vendors

The little model wearing a long dress pairs with a similar model facing in the other directions. Three different heads occur on the girl seated facing left and two on the girl facing right. The companion to the last figure has not been identified.







# Foxes



# Gardeners





## Girl Resting on Plinths



# Grecian & Daughter



# Jim Crow



# King William IV, Queen Adelaide



# Land Lord & Land Lady



Courtesy the Brighton and Hove Museums



# Leopards

The large leopard titled THE DEATH OF A NEGRO probably once held a Black man between its jaws and is not from the same molds as the tiger in THE DEATH OF MUNROW groups. The group relates to a fake-news report of 1834 telling of animals escaping from Wombwell's menagerie. Figure groups showing lions and tigers mauling other victims are on the same theme.



# Lions

The lion mauling a child and the lion mauling a woman relate to fake news reports of 1834 detailing the escape of animals from Wombwell's menagerie.









## Malibran, Maria

Sherratt subsequently used the molds from this figure to fashion a figure of the young Queen Victoria.



## Man with Book, Man with Sword

These small figures are also on Sherratt's large "Prepare to Meet Thy God" groups.



# Milkmaid





Miss Foot

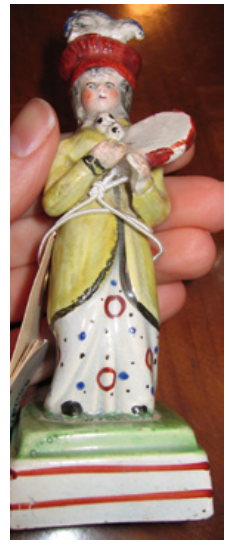


# Musicians









## Nelson

This bust is impressed “NELSON” on the reverse and, like the small bust of the Duke of York, Sherratt may have made it. The painting on both busts is atypical, but the royal motif on the socle of each is otherwise only associated with Sherratt. He used this motif on a bust of Byron and on boxes (see Dogs and Girls Resting on Plinths) that display additional Sherratt features.



Courtesy National Maritime Museum

# Neptune and Venus



and Albert Museum, London.



(c) The Victoria and Albert Museum, London.



# Paul Pry

Sherratt made Paul Pry in two sizes.





# Performing Animals



# Polito's Menagerie



# Pomona

The usual model of Pomona (the first three) is in the same style as figures of Ceres and Flora and can be found paired with one or the other. No companion to the final small figure is recorded.



## Poor Soldier

This model is known as the Poor Soldier because at least one other potter made a similar figure titled thus. The base strongly suggests a Sherratt attribution.



# Prepare to Meet thy God

See also “Archangel Gabriel” for a figure titled “Prepare to Meet thy God.”



Putti



Courtesy Madelena

## Puzzle Jugs

Sherratt probably made these two jugs. Both are painted in a typical Sherratt manner; the small musician on the left hand jug is on Sherratt menageries and occurs as a free standing figure; and the sun face is on Sherratt's Prepare to Meet Thy God groups. Not all jugs from these molds exhibit Sherratt features, so perhaps other potters made them.



Courtesy John Howard

# Queen Victoria

This figure is from the same molds as the figure of Maria Malibran





# Reading





## Red Barn

The second Red Barn is essentially the same as the first but has a different base and bocage. The third Red Barn is a petite model, measuring just under 5" across.



## Religious Officials

These figures may or may not portray the Rev. John Wesley. There is insufficient evidence for confidently attributing them to Sherratt, but the distinctive enamelling strongly suggests that he made them.



# Remus & Romulus



# Rev. John Wesley



# Roger Giles



# Royal Supporters





# Saint George & Dragon



Saints, Biblical



## Seasons

These figures allegorical of Summer, Autumn, and Winter are the only recorded Sherratt Seasons. Winter is similar to a model of a shepherd.



# Sheep





# Shepherds

Also see “Musicians” for musicians with sheep.





Tam O'Shanter, Souter Johnny





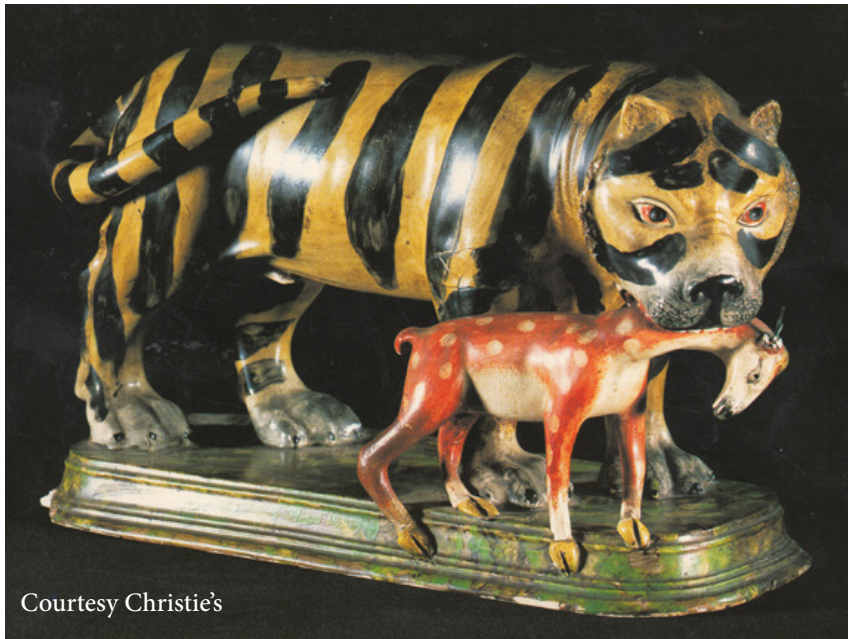
Teetotal



# Tigers

The large tiger holding a deer shares molds with rare Sherratt groups. The base is on a bear baiting group, and the deer is also in the jaws of a large lion. (See Bear Baiting and Lions.)

The other five groups relate to fake-news reports of 1834 recounting the escape of animals from Wombwell's menagerie. (See Lions and Leopards for other groups on this theme.)



Courtesy Christie's



Courtesy John Howard





# Toby Jug



Courtesy Bonhams

# Turk



## Unidentified Subjects

The girl (with losses) in the second group occurs as a lone figure of a bird nester.



Vendors

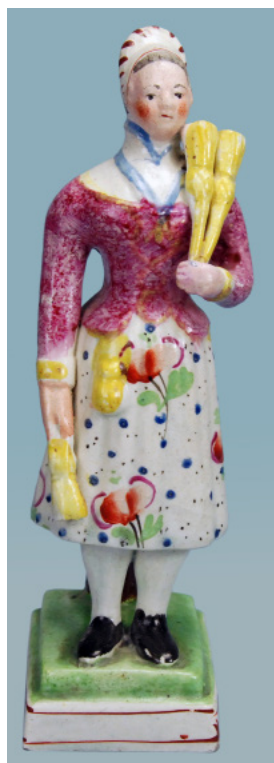


Venus and Cupids





# Vestris, Madame



# Virgin Mary



Courtesy Winterthur Museum

Weddings





© The Fitzwilliam Museum, Cambridge, UK



# Welsh Tailor and Wife



Courtesy Andrew Dando

# Wombwell's Menagerie

